

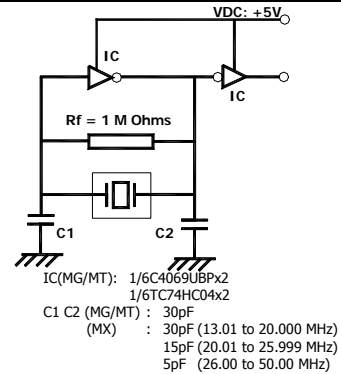
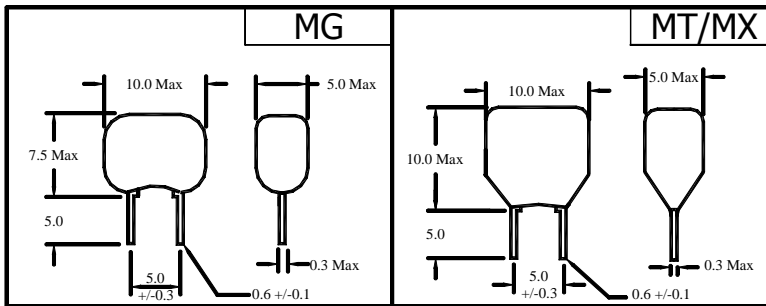
**MZTA Series of Ceramic Resonator**

**1.79 MHz to 50.00 MHz**

□□□ = Frequency in MHz

**Technical Characteristics**

Part Number □□□ = MHz	Frequency Range in MHz	Frequency Accuracy at +25°C	Temperature Stability -40°C to +125°C	Operating Temperature	Aging for 10 Years
MZTA□□□MG	1.79 to 8.00	±0.5%	±0.3%	-40°C to +125°C	±0.3%
MZTALS□□□MG	3.00 to 8.00	±0.5%	±0.3%	-40°C to +125°C	±0.3%
MZTA□□□MT	8.01 to 13.00	±0.5%	±0.3%	-40°C to +125°C	±0.3%
MZTA□□□MX	13.01 to 50.00	±0.5%	±0.3%	-40°C to +125°C	±0.3%

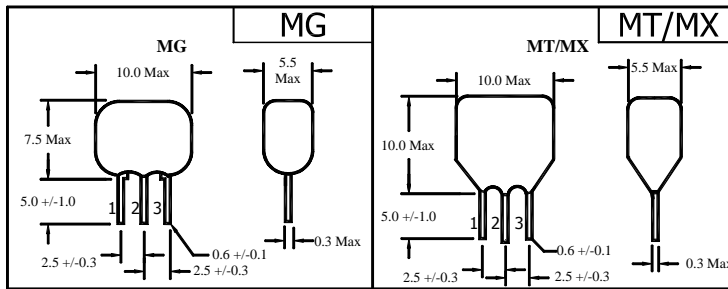


**MZTT Series of Ceramic Resonator with Built-in Capacitor**

**1.79 MHz to 50.00 MHz**

**Technical Characteristics**

Part Number □□□ = MHz	Frequency Range in MHz	Frequency Accuracy at +25°C	Temperature Stability -40°C to +125°C	Operating Temperature	Aging for 10 Years
MZTT□□□MG	1.79 to 8.00	±0.5%	±0.3%	-40°C to +125°C	±0.3%
MZTTLS□□□MG	3.00 to 8.00	±0.5%	±0.3%	-40°C to +125°C	±0.3%
MZTT□□□MT	8.01 to 13.00	±0.5%	±0.3%	-40°C to +125°C	±0.3%
MZTT□□□MX	13.01 to 50.00	±0.5%	±0.3%	-40°C to +125°C	±0.3%



PIN 1 = INPUT  
PIN 2 = GROUND  
PIN 3 = OUTPUT

